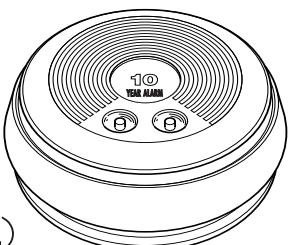


USER'S MANUAL



SMOKE ALARM WITH TEN-YEAR NON-REPLACEABLE LITHIUM POWER CELLS

IMPORTANT! PLEASE READ CAREFULLY AND SAVE.

This user's manual contains important information about your Smoke Alarm's operation. If you are installing this Smoke Alarm for use by others, you must leave this manual—or a copy of it—with the end user.

Printed in Mexico Models SA10YR 4010YR M08-0021-003 J1 01/05

TABLE OF CONTENTS

Fire Safety Tips1
 Before You Install This Smoke Alarm1
 How To Install This Smoke Alarm2-3
 Weekly Testing2
 Regular Maintenance2-3
 To Deactivate the Smoke Alarm2-3
 If This Smoke Alarm Sounds3
 What To Do In Case Of Fire3
 Using the Silence Feature3
 If You Suspect A Problem4
 Limited Warranty4
 Recommended Locations For Smoke Alarms4-5
 Locations To Avoid For Smoke Alarms5
 About Smoke Alarms5
 Special Compliance Considerations6
 Limitations Of Smoke Alarms6

All Rights Reserved. © 2005 BRK Brands, Inc. BRK Brands, Inc., 3901 Liberty Street Road, Aurora, IL 60504-8122 Consumer Affairs: (800) 323-9005 www.firstaler.com • www.brkelectronics.com

All First Alert® and BRK® Smoke Alarms conform to regulatory requirements, including UL217 and are designed to detect particles of combustion. Smoke particles of varying number and size are produced in all fires.

Ionization technology is generally more sensitive than photoelectric technology at detecting small particles, which tend to be produced in greater amounts by flaming fires, which consume combustible materials rapidly and spread quickly. Sources of these fires may include paper burning in a wastebasket, or a grease fire in the kitchen.

Photoelectric technology is generally more sensitive than ionization technology at detecting large particles, which tend to be produced in greater amounts by smoldering fires, which may smolder for hours before bursting into flame. Sources of these fires may include cigarettes burning in couches or bedding.

For maximum protection, use both types of Smoke Alarms on each level and in every bedroom of your home.

FIRE SAFETY TIPS

Follow safety rules and prevent hazardous situations: 1) Use smoking materials properly. Never smoke in bed. 2) Keep matches or lighters away from children. 3) Store flammable materials in proper containers. 4) Keep electrical appliances in good condition and don't overload electrical circuits; 5) Keep stoves, barbecue grills, fireplaces and chimneys grease- and debris-free; 6) Never leave anything cooking on the stove unattended; 7) Keep portable heaters and open flames, like candles, away from flammable materials; 8) Don't let rubbish accumulate.

Keep alarms clean, and test them weekly. Replace alarms immediately if they are not working properly. Smoke Alarms that do not work cannot alert you to a fire. Keep at least one working fire extinguisher on every floor, and an additional one in the kitchen. Have fire escape ladders or other reliable means of escape from an upper floor in case stairs are blocked.

BEFORE YOU INSTALL THIS SMOKE ALARM

IMPORTANT! Read "Recommended Locations for Smoke Alarms" and "Locations to Avoid for Smoke Alarms" before beginning. This unit monitors the air, and when smoke reaches its sensing chamber, it alarms. It can give you more time to escape before fire spreads. This unit can ONLY give an early warning of developing fires if it is installed, maintained and located where smoke can reach it, and where all residents can hear it, as described in this manual. This unit will not sense gas, heat, or flame. It cannot prevent or extinguish fires.

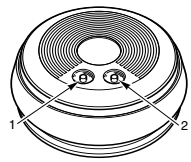
Understand The Different Type of Smoke Alarms
 Battery powered or electrical? Different Smoke Alarms provide different types of protection. See "About Smoke Alarms" for details.
Know Where To Install Your Smoke Alarm
 Fire Safety Professionals recommend at least one Smoke Alarm on every level of your home, in every bedroom, and in every bedroom hallway or separate sleeping area. See "Recommended Locations For Smoke Alarms" and "Locations To Avoid For Smoke Alarms" for details.
Know What Smoke Alarms Can and Can't Do
 A Smoke Alarm can help alert you to fire, giving you precious time to escape. It can only sound an alarm once smoke reaches the sensor. See "Limitations of Smoke Alarms" for details.
Check Your Local Building Codes
 This Smoke Alarm is designed to be used in a typical single-family home. It alone will not meet requirements for boarding houses, apartment buildings, hotels or motels. See "Special Compliance Considerations" for details.

WARNING!
 • This unit will not alert hearing impaired residents. It is recommended that you install special units which use devices like flashing strobe lights to alert the hearing impaired residents.
 • Do not connect this unit to any other alarm or auxiliary device. It is a single-station unit that cannot be linked to other devices. Connecting anything else to this unit may prevent it from working properly.
 • This Smoke Alarm cannot detect smoke until you activate it. You must activate the unit for it to receive power from the power cells. Failure to activate the unit will prevent the alarm from providing any warning of smoke or fire.
 • The power cells in this unit cannot be replaced—once they reach the end of their service life, you must install a new Smoke Alarm. You must deactivate the unit before disposing of it.

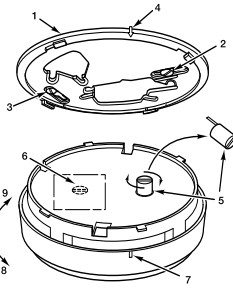
CAUTION!
 • Do not install this unit over an electrical junction box. Air currents around junction boxes can prevent smoke from reaching the sensing chamber and prevent the unit from alarming. Only AC powered units are intended for installation over junction boxes.
 • Do not stand too close to the unit when the alarm is sounding. It is loud to wake you in an emergency. Exposure to the horn at close range may harm your hearing.
 • Do not paint over the unit. Paint may clog the openings to the sensing chamber and prevent the unit from operating properly.

HOW TO INSTALL THIS SMOKE ALARM

THE PARTS OF THIS SMOKE ALARM



- Parts of the Smoke Alarm Cover**
1. Clear test button
 2. Blue "Push To Silence" button



- Parts of the Smoke Alarm Cover**
1. Mounting bracket
 2. Keyhole Shaped Mounting Slot "RPON"
 3. Keyhole Shaped Mounting Slot "FGH"
 4. Alignment Arrow On Mounting Bracket
 5. Raised Activation Tab
 6. Deactivation Tab (located under label)
 7. Alignment Tab On Alarm
 8. Turn to attach to bracket
 9. Turn this way to remove from bracket

TOOLS YOU WILL NEED:
 This unit is designed to be mounted on the ceiling, or on the wall if necessary.

- Pencil
- Drill with 3/16" (5 mm) drill bit
- Standard flathead screwdriver
- Hammer

FOLLOW THESE SIMPLE STEPS!

INSTALL THE MOUNTING BRACKET:

1. Locate the mounting bracket and find the two keyhole shaped slots marked "RPON" and "FGH."
2. Place the bracket on the wall or ceiling where you want to mount the alarm.
3. Hold the mounting bracket against the ceiling (or wall) and trace around the inside of the two keyhole slots labeled "RPON" and "FGH" (Fig. 1)
4. Make a mark inside each outline for the drill holes. Line one mark up with the letter "P" in the slot labeled "RPON," and the other with the letter "H" in the slot marked "FGH. This will help line your screws correctly and make it easier to attach the mounting bracket. (Fig. 2)



Fig. 1

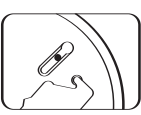


Fig. 2

5. Using a 3/16-inch (5 mm) drill bit, drill a hole through each pencil mark.
6. Insert the plastic screw anchors (in the plastic bag with screws) into the holes. Tap the screw anchors gently with a hammer, if necessary, until they are flush with the ceiling or wall.
7. Tighten the screws (provided) into the screw anchors, then loosen them 2 turns.
8. Hold the mounting bracket against the ceiling or wall so the large end of slot "RPON" slides over the mounting screw. Line the screw head up with the letter "P" printed on the bracket (in the narrow end of the keyhole slot). You will notice the bracket may not fit over the second screw. This is normal.

WEEKLY TESTING

WARNING!

- NEVER use an open flame of any kind to test this unit. You might accidentally damage or set fire to the unit or to your home. The built-in test switch accurately tests the unit's operation as required by Underwriters Laboratories, Inc. (UL). If you choose to use an aerosol smoke product to test the Smoke Alarm, be certain to use one that has been Listed to Underwriters Laboratories, Inc. Safety Standards, and use it only as directed. Use of non-UL Listed products or improper use of UL Listed products may affect the Smoke Alarm's sensitivity, and may void your warranty.
- If the Alarm ever fails to test properly, replace it immediately. Products under warranty may be returned to the manufacturer for replacement. See "Limited Warranty".

CAUTION!

DO NOT stand close to the Alarm when the horn is sounding. Exposure at close range may be harmful to your hearing. When testing, step away when horn starts sounding.

It is important to test this unit every week to make sure it is working properly. Using the test button is the recommended way to test this Smoke Alarm. Press and hold the test button on the cover of the unit until the alarm sounds (the unit may continue to alarm for a few seconds after you release the button). During testing you will hear a loud, repeating horn pattern: 3 beeps, pause, 3 beeps, pause.

REGULAR MAINTENANCE

- This unit has been designed to be as maintenance free as possible, but there are a few simple things you must do to keep it working properly.
- Test it at least once a week.
 - Clean the Smoke Alarm at least once a month; gently vacuum the outside of the Smoke Alarm using your household vacuum's soft brush attachment. A can of clean compressed air (sold at computer or office supply stores) may also be used. Follow manufacturer instructions for use. Test the Smoke Alarm. Never use water, cleaners or solvents since they may damage the unit.
 - If the Smoke Alarm becomes contaminated by excessive dirt, dust and/or grime, and cannot be cleaned to avoid unwanted alarms, replace the unit immediately.
 - Relocate the unit if it sounds frequent unwanted alarms. See "Locations to Avoid For Smoke Alarms" for details.

When the power cells become weak, the Smoke Alarm unit will "chirp" about once a minute (the low power warning). This low power warning should last for 30 days, but you should replace the Smoke Alarm immediately to continue your protection. (To make sure you are truly hearing the low power warning and not the reminder for the Silence Feature, wait at least 30 minutes before deactivating the Smoke Alarm.)

TO DEACTIVATE THE SMOKE ALARM

WARNING!

Alarm is sealed. Power cells are not replaceable. Once they reach the end of their service life, or after 10 years—whichever comes first—you must install a new Smoke Alarm.

NOTE: The low power warning sounds like the reminder "chirp" for the Silence Feature. When you activate the Silence Feature, the unit will "chirp" about once a minute for up to 15 minutes as a reminder. To make sure you are truly hearing the low power warning and not the reminder for the Silence Feature, wait at least 30 minutes before deactivating the unit.

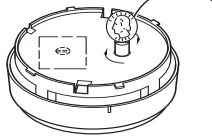
Continued...

9. Rotate the mounting bracket (to the right) until it fits around the second screw head. Then move the bracket so the second screw lines up with the "H" printed on the bracket.
10. Tighten both screws all the way.

ACTIVATE THE POWER CELLS:

WARNING!
 You must activate the power cells before attaching the Smoke Alarm to the bracket.

1. Find the raised tab on the bottom of the alarm.
2. Insert a large coin or screwdriver in the slot. Turn clockwise (to the right) 1/2 turn until the tab comes out. This activates the power cells. If you have trouble activating the unit, call Consumer Affairs at: 1-800-323-9005 for assistance.



NOTE: You may hear a "beep" when you remove the activation tab. This indicates the power cells have been activated correctly, but you must still test the unit using the test button to make sure it is working properly.

3. Test the Smoke Alarm. Press and hold the test button on the cover of the unit until the alarm sounds (the unit may continue to alarm for a few seconds after you release the button). During testing, you will hear a loud, repeating horn pattern: 3 beeps, pause, 3 beeps, pause. If the unit does not alarm during testing, call Consumer Affairs for assistance.

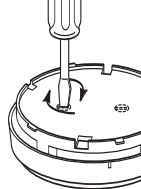
ATTACH SMOKE ALARM TO MOUNTING BRACKET

1. Line up the alignment tab on the unit with the alignment tab on the mounting bracket. Push the unit toward the bracket, and turn it clockwise until you feel it snap into place.
2. Test the unit again. Press the clear test button until the horn begins sounding. During testing, you will hear a loud, repeating horn pattern: 3 beeps, pause, 3 beeps, pause.

TO DEACTIVATE THE SMOKE ALARM (Continued)

After 10 years or after the "low power warning" sounds (whichever comes first):

1. Remove the label on the bottom of the unit and locate the flat round tab.
2. Insert a flathead screwdriver in the slot and turn clockwise (to the right) until the tab comes out. This will discharge the power cells and deactivate the unit.
3. Once you deactivate this unit, it will not detect smoke or alarm. It cannot be reactivated. You must install a new unit to continue your protection.
4. Install a new Smoke Alarm immediately!



IF THIS SMOKE ALARM SOUNDS

RESPONDING TO AN ALARM

During an alarm, you will hear a loud, repeating horn pattern: 3 beeps, pause, 3 beeps, pause.

- **IF THE ALARM!**
 If the unit alarms and you are not testing the unit, it is warning you of a potentially dangerous situation that requires your immediate attention. NEVER ignore any alarm. Ignoring the alarm may result in injury or death.
- Never remove the power cells from this Smoke Alarm to stop an unwanted alarm (caused by cooking smoke, etc.). Removing the power cells disables the alarm so it cannot sense smoke, and removes your protection. Instead use the Silence feature, then open a window or fan the smoke away from the unit. The Smoke Alarm will reset automatically.
- If the unit alarms get everyone out of the house immediately.

WHAT TO DO IN CASE OF FIRE

- Don't panic; stay calm. Follow your family escape plan.
- Get out of the house as quickly as possible. Don't stop to get dressed or collect anything.
- Feel doors with the back of your hand before opening them. If a door is cool, open it slowly. Don't open a hot door. Keep doors and windows closed, unless you must escape through them.
- Cover your nose and mouth with a cloth (preferably damp). Take short, shallow breaths.
- Meet at your planned meeting place outside your home, and do a head count to make sure everybody got out safely.
- Call the Fire Department as soon as possible from outside. Give your address, then your name.
- Never go back inside a burning building for any reason.
- Contact your Fire Department for ideas on making your home safer.

WARNING!
 Alarms have various limitations. See "Limitations of Smoke Alarms" for details.

USING THE SILENCE FEATURE

The Silence Feature can temporarily quiet an unwanted alarm for several minutes. To use this feature, press the blue "Push to Silence" button on the cover. The alarm will "chirp" about once a minute (for up to 15 minutes) to remind you the alarm has been silenced. The "chirping" will stop when the unit returns to normal operation. If the unit will not silence and no heavy smoke is present, or if it stays in silence mode continuously ("chirps" for longer than 30 minutes), the unit should be replaced immediately. See "To Deactivate the Smoke Alarm".

WARNING!

The Silence Feature does not disable the unit—it makes it temporarily less sensitive to smoke. For your safety, if smoke around the unit is dense enough to suggest a potentially dangerous situation, it will stay in alarm, or may re-alarm quickly. If you do not know the source of the smoke, do not assume it is an unwanted alarm. Not responding to an alarm can result in property loss, injury or death.

IF YOU SUSPECT A PROBLEM

Smoke Alarms may not operate properly because of dead or weak power cells, a build-up of dirt, dust or grease on the cover, or installation in an improper location. Clean the Smoke Alarm as described in "Regular Maintenance," and test the Smoke Alarm again. If it fails to test properly when you use the test button, or if the problem persists, replace the Smoke Alarm immediately.

- If you experience frequent non-emergency alarms (like those caused by cooking smoke), re-locating the Smoke Alarm.
- If the alarm sounds when no smoke is visible, try cleaning or re-locating the Smoke Alarm. The cover may be dirty.
- If the alarm no longer sounds during testing, replace the Smoke Alarm! If the Smoke Alarm was properly activated, and had previously alarmed during testing, the power cells are at the end of their service life. (See "Regular Maintenance.")
- If the alarm will not silence when you use the Silence feature, DO NOT IGNORE THE ALARM! This indicates a potentially dangerous situation.
- If the Smoke Alarm "chirps" about once a minute (for more than 30 minutes), Replace the Smoke Alarm! (See "Regular Maintenance.") This is the low power cell warning.

Do not try fixing the alarm yourself – this will void your warranty!

If the Smoke Alarm is still not operating properly, and it is still under warranty, please see "How to Obtain Warranty Service" in the Limited Warranty below.

LIMITED WARRANTY

BRK Brands, Inc., ("BRK") the maker of First Alert® and BRK® brand products warrants that for a period of ten years from the date of purchase, this product will be free from defects in material and workmanship. BRK, at its option, will repair or replace this product or any component of the product found to be defective during the warranty period. Replacement will be made with a new or remanufactured product or component. If the product is no longer available, replacement may be made with a similar product of equal or greater value. This is your exclusive warranty.

This warranty is valid for the original retail purchaser from the date of initial retail purchase and is not transferable. Keep the original sales receipt. Proof of purchase is required to obtain warranty performance. BRK dealers, service centers, or retail stores selling BRK products do not have the right to alter, modify or in any way change the terms and conditions of this warranty.

This warranty does not cover normal wear of parts or damage resulting from any of the following: negligent use or misuse of the product, use of improper voltage or current, use contrary to the operating instructions, disassembly, repair or alteration by anyone other than BRK or an authorized service center. Further, the warranty does not cover Acts of God, such as fire, flood, hurricanes and tornadoes or any batteries that are included with this unit.

BRK shall not be liable for any incidental or consequential damages caused by the breach of any express or implied warranty. Except to the extent prohibited by applicable law, any implied warranty of merchantability or fitness for a particular purpose is limited in duration to the duration of the above warranty. Some states, provinces or jurisdictions do not allow the exclusion or limitation of incidental or consequential damages or limitations on how long an implied warranty lasts, so the above limitations or exclusion may not apply to you. This warranty gives you specific legal rights, and you may also have other rights that vary from state to state or province to province.

How to Obtain Warranty Service

Service: If service is required, do not return the product to your retailer. In order to obtain warranty service, contact the Consumer Affairs Division at 1-800-323-9005, 7:30 AM – 5:00 PM Central Standard Time, Monday through Friday. To assist us in serving you, please have the model number and date of purchase available when calling. 303 Nelson Avenue, Neosho, MO 64850-8806. This Smoke Alarm is designed to operate for 10 years, and is backed by a 10-year limited warranty. To date, the actual alarm, however, has not been tested for 10 years. The power cells in this Smoke Alarm are not replaceable. When they reach the end of their service life, you must replace the entire Smoke Alarm to continue your protection.

RECOMMENDED LOCATIONS FOR SMOKE ALARMS

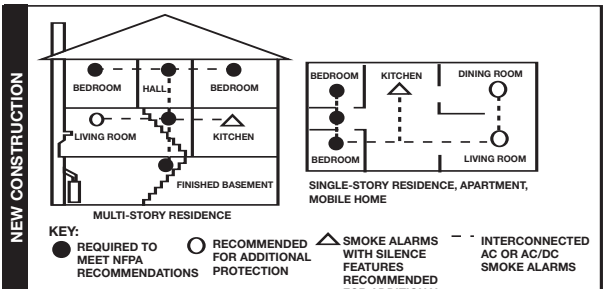
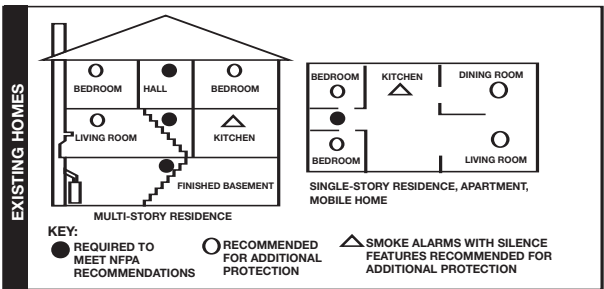
Installing Smoke Alarms in Single-Family Residences

The National Fire Protection Association (NFPA), recommends one Smoke Alarm on every level of every sleeping area, and in every bedroom. In new construction, the Smoke Alarms must be AC powered and interconnected. See "Agency Placement Recommendations" for details. For additional coverage, it is recommended that you install a Smoke Alarm in all rooms, halls, storage areas, finished attics, and basements, where temperatures normally remain between 40° F (4° C) and 100° F (38° C). Make sure no door or other obstruction could keep smoke from reaching the Smoke Alarms.

More specifically, install Smoke Alarms:

- On every level of your home, including finished attics and basements.
- Inside every bedroom, especially if people sleep with the door partly or completely closed.
- In the hall near every sleeping area. If your home has multiple sleeping areas, install a unit in each. If a hall is over 40 feet (12 meters) long, install an alarm at each end.
- At the top of the first-to-second floor stairway, and at bottom of basement stairway.

IMPORTANT!
 Specific requirements for Smoke Alarm installation vary from state to state and from region to region. Check with your local Fire Department for current requirements in your area. It is recommended AC or AC/DC units be interconnected for added protection.



INSTALLING SMOKE ALARMS IN MOBILE HOMES & RVs

For minimum security install one Smoke Alarm as close to each sleeping area as possible. For more security, put one unit in each room. Many older mobile homes (especially those built before 1978) have little or no insulation. If your mobile home is not well insulated, or if you are unsure of the amount of insulation, it is important to install units on inside walls only. Smoke Alarms should be installed where temperatures normally remain between 40° F (4° C) and 100° F (38° C). **WARNING: Test units used in RVs after the vehicle has been in storage, before every trip, and once a week while in use. Failure to test units used in RVs as described may remove your protection.**

IMPORTANT!

This equipment should be installed in accordance with NFPA (National Fire Protection Association) 72 and 101. National Fire Protection Association, One Batterymarch Park, Quincy, MA 02269-9101. Additional local building and regulatory codes may apply in your area. Always check compliance requirements before beginning any installation.

AGENCY PLACEMENT RECOMMENDATIONS

NFPA 72 (National Fire Code)

Smoke Alarms shall be installed in each separate sleeping room, outside each sleeping area in the immediate vicinity of the bedrooms and on each additional story of the family living unit, including basements and excluding crawl spaces and unfinished attics.

In new construction, Alarms shall be so arranged that operation of any one Alarm shall cause the operation of all Alarms within the dwelling.

Smoke Detection-Are More Smoke Alarms Desirable? The required number of Smoke Alarms might not provide reliable early warning protection for those areas separated by a door from the areas protected by the required Smoke Alarms. For this reason, it is recommended that the household consider the use of additional Smoke Alarms for those areas for increased protection. The additional areas include the basement, bedrooms, dining room, furnace room, utility room, and hallways not protected by the required Smoke Alarms. The installation of Smoke Alarms in kitchens, attics (finished or unfinished), or garages is not normally recommended, as these locations occasionally experience conditions that can result in improper operation.

California State Fire Marshal (CSFM)

Early warning detection is best achieved by the installation of fire detection equipment in all rooms and areas of the household as follows: A Smoke Alarm installed in each separate sleeping area (in the vicinity, but outside bedrooms), and Heat or Smoke Alarms in the living rooms, dining rooms, bedrooms, kitchens, hallways, finished attics, furnace rooms, closets, utility and storage rooms, basements, and attached garages.

LOCATIONS TO AVOID FOR SMOKE ALARMS

For best performance, AVOID installing Smoke Alarms in these areas:

- Where combustion particles are produced. Combustion particles form when something burns. Areas to avoid include poorly ventilated kitchens, garages, and furnace rooms. Keep units at least 20 feet (6 meters) from the sources of combustion particles (stove, furnace, water heater, space heater) if possible. In areas where a 20-foot (6 m) distance is not possible – in modular, mobile, or smaller homes, for example – it is recommended the Smoke Alarm be placed as far from these fuel-burning sources as possible. The placement recommendations are intended to keep these Alarms at a reasonable distance from a fuel-burning source, and thus reduce "unwanted" alarms. Unwanted alarms can occur if a Smoke Alarm is placed directly next to a fuel-burning source. Ventilate these areas as much as possible.
- In air streams near kitchens. Air currents can draw cooking smoke into the sensing chamber of a Smoke Alarm near the kitchen.
- In very damp, humid or steamy areas, or directly near bathrooms with showers. Keep units at least 10 feet (3 meters) away from showers, saunas, dishwashers, etc.
- Where the temperatures are regularly below 40° F (4° C) or above 100° F (38° C), including unheated buildings, outdoor rooms, porches, or unfinished attics or basements.
- In very dusty, dirty, or greasy areas. Do not install a Smoke Alarm directly over the stove or range. Clean a laundry room unit frequently to keep it free of dust or lint.
- Near fresh air vents, ceiling fans, or in very drafty areas. Drafts can blow smoke away from the unit, preventing it from reaching the sensing chamber.
- In insect infested areas. Insects can clog openings to the sensing chamber and cause unwanted alarms.
- Less than 12 inches (305mm) away from fluorescent lights. Electrical "noise" can interfere with the sensor.
- In "dead air" spaces. "Dead air" spaces may prevent smoke from reaching the Smoke Alarm.

Avoiding Dead Air Spaces

"Dead air" spaces may prevent smoke from reaching the Smoke Alarm. To avoid dead air spaces, follow the installation recommendations below.

On ceilings, install Smoke Alarms as close to the center of the ceiling as possible. If this is not possible, install the Smoke Alarm at least 4 inches (102 mm) from the wall or corner.

For wall mounting (if allowed by building codes), the top edge of Smoke Alarms should be placed between 4 inches (102 mm) and 12 inches (305 mm) from the wall/ceiling line, below typical "dead air" spaces.

On a peaked, gabled, or cathedral ceiling, install the first Smoke Alarm within 3 feet (0.9 meters) of the peak of the ceiling, measured horizontally. Additional Smoke Alarms may be required depending on the length, angle, etc. of the ceiling's slope. Refer to NFPA 72 for details on requirements for sloped or peaked ceilings.

ABOUT SMOKE ALARMS

Battery or DC operated Smoke Alarms: Provide protection even when electricity fails, provided the batteries or power cells are fresh and correctly installed or activated. Units are easy to install, and do not require professional installation.

AC powered Smoke Alarms: Can be interconnected so if one unit senses smoke, all units alarm. They do not operate if electricity fails. **AC with battery (AC) back-up** will operate if electricity fails, provided the batteries are fresh and correctly installed. AC and AC/DC units must be installed by a qualified electrician.

Smoke Alarms for Solar or Wind Energy users and battery backup power systems: AC powered Smoke Alarms should only be operated with true or pure sine wave inverters. Operating this Smoke Alarm with most battery-powered UPS (uninterruptible power supply) products or square wave or "quasi sine wave" inverters will damage the Alarm. If you are not sure about your inverter or UPS type, please consult with the manufacturer to verify.

Smoke Alarms for the hearing impaired: Special purpose Smoke Alarms should be installed for the hearing impaired. They include a visual alarm and an audible alarm horn, and meet the requirements of the Americans With Disabilities Act. Can be interconnected so if one unit senses smoke, all units alarm.

Smoke alarms are not to be used with detector guards unless the combination has been evaluated and found suitable for that purpose.

All these Smoke Alarms are designed to provide early warning of fires if located, installed and cared for as described in the user's manual, and if smoke reaches them. If you are unsure which type of unit to install, refer to Chapter 2 of the National Fire Protection Association (NFPA) Standard 72 (National Fire Alarm Code) and NFPA 101 (Life Safety Code). National Fire Protection Association, One Batterymarch Park, Quincy, MA 02269-9101. Local building codes may also require specific units in new construction or in different areas of the home.

SPECIAL COMPLIANCE CONSIDERATIONS

WARNING!

This Smoke Alarm alone is not a suitable substitute for complete fire detection systems in places housing many people—like apartment buildings, condominiums, hotels, motels, dormitories, hospitals, long-term health care facilities, nursing homes, day care facilities, or group homes of any kind—even if they were once single-family homes. It is not a suitable substitute for complete fire detection systems in warehouses, industrial facilities, commercial buildings, and special-purpose non-residential buildings which require special fire detection and alarm systems. Depending on the building codes in your area, this Smoke Alarm may be used to provide additional protection in these facilities.

The following information applies to all four building types below: In new construction, most building codes require the use of AC or AC/DC powered Smoke Alarms only. AC, AC/DC, or DC powered Smoke Alarms can be used in existing construction as specified by local building codes. Refer to NFPA 72 (National Fire Alarm Code) and NFPA 101 (Life Safety Code), local building codes, or consult your Fire Department for detailed fire protection requirements in buildings not defined as "households."

1. Single-Family Residence:

</